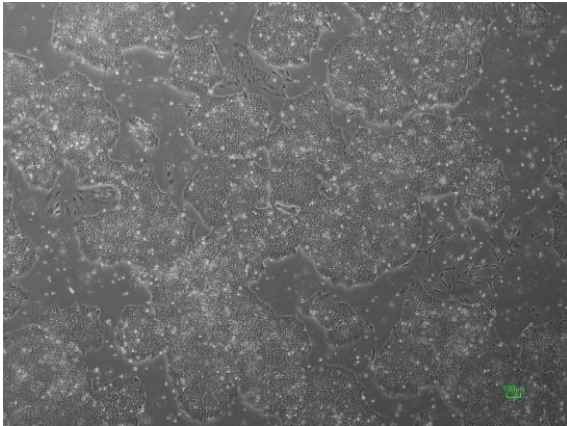
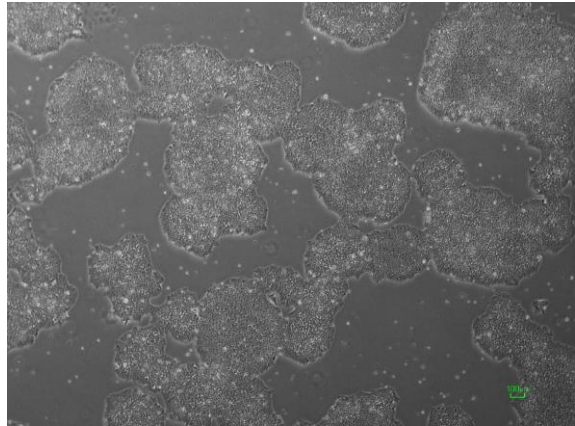


【 CiRA-jk-0048 】 Morphology of iPSC colonies

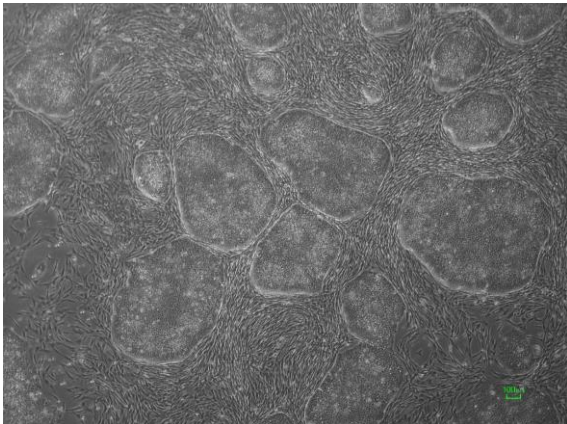
CiRA -jk-0048-A: passage-2



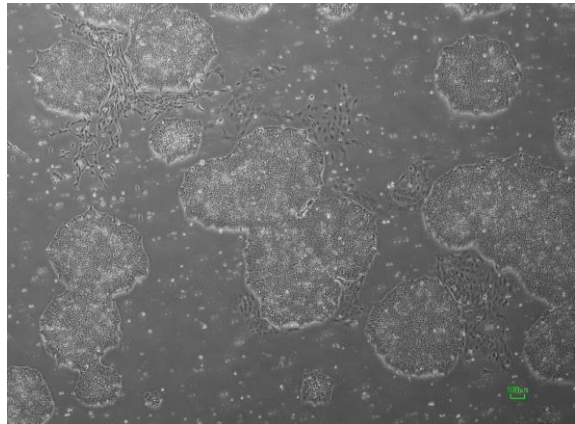
CiRA -jk-0048-B: passage-2



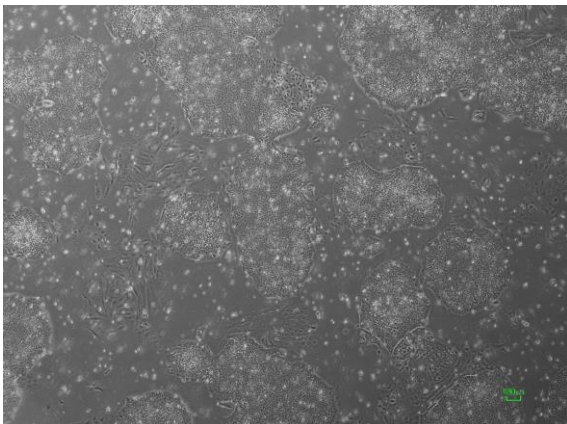
CiRA -jk-0048-C: passage-2



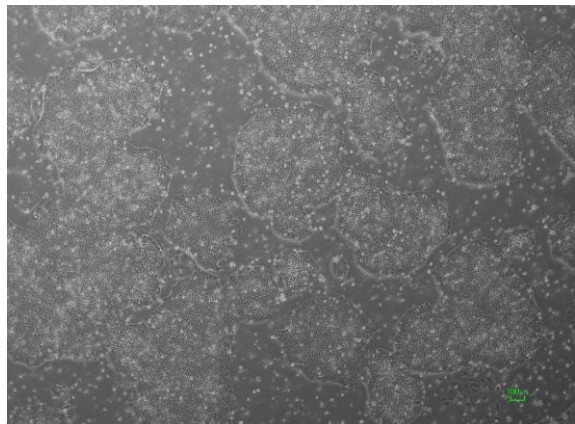
CiRA -jk-0048-D: passage-2



CiRA -jk-0048-E: passage-2



CiRA -jk-0048-F: passage-2



(All images were captured at 4x magnification)